

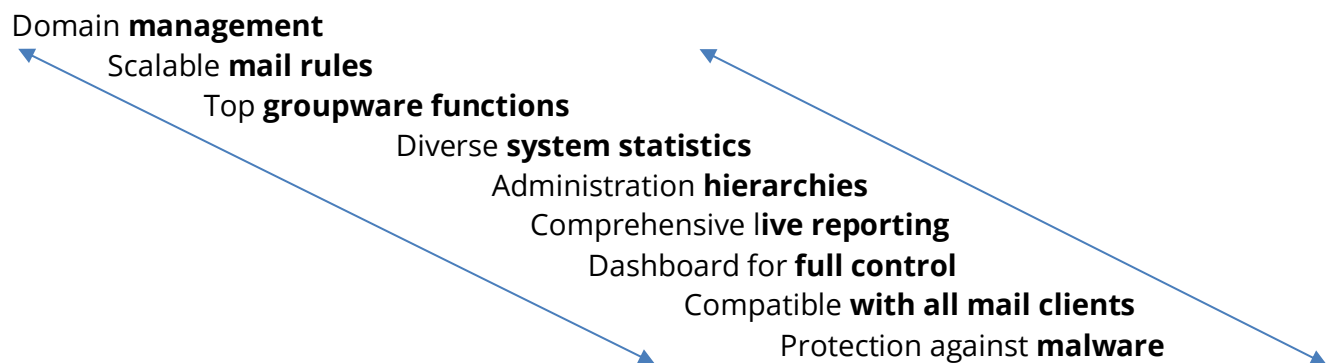


The E-Mail-Security and Groupware of the future

As part of an **e-mail and groupware security solution**, TUXGUARD combines the protection of a **security gateway** with **easy-to-use groupware** - and adds a **multi-client capable administration console**.

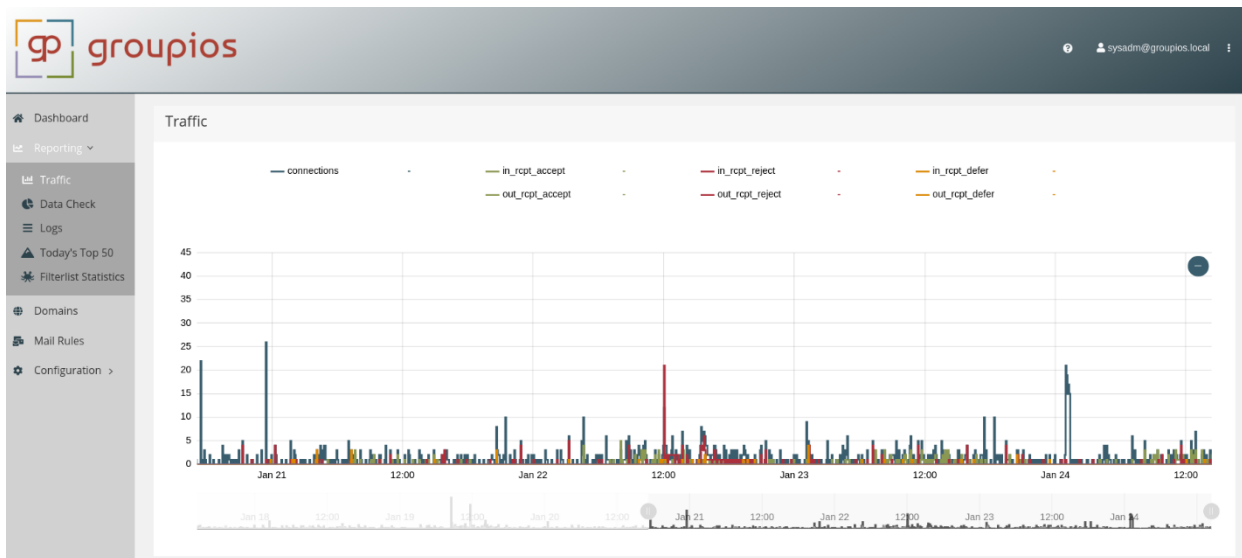
groupios is **100% GDPR-compliant**.

groupios at a glance

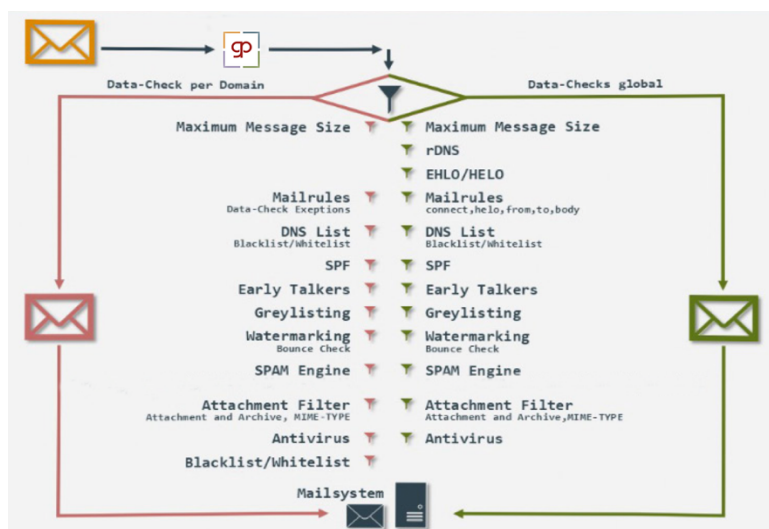


The Gateway – Security „Made in Germany“

The groupios gateway reliably eliminates all forms of malware and provides effective protection against cybercrime. Threats such as spyware, malware or ransomware, but also annoying time-wasters such as spam do not even reach your e-mail inbox.

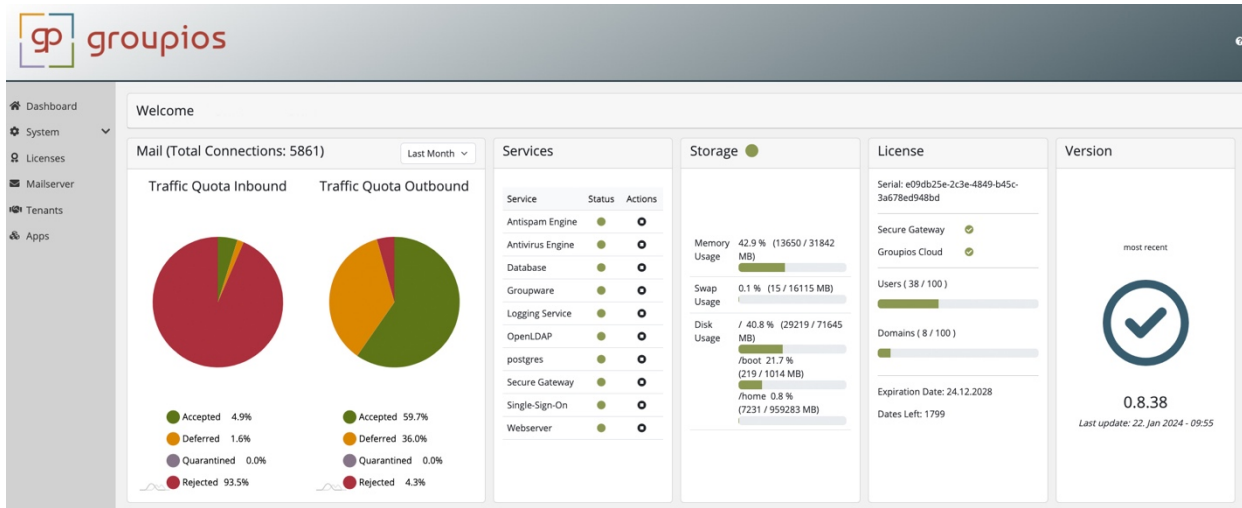


Comprehensive e-mail rules for all-round protection



groupios – for companies of any size

In your dashboard, you have a live view of all network activities like in a cockpit and you can navigate, act and react in a targeted manner.



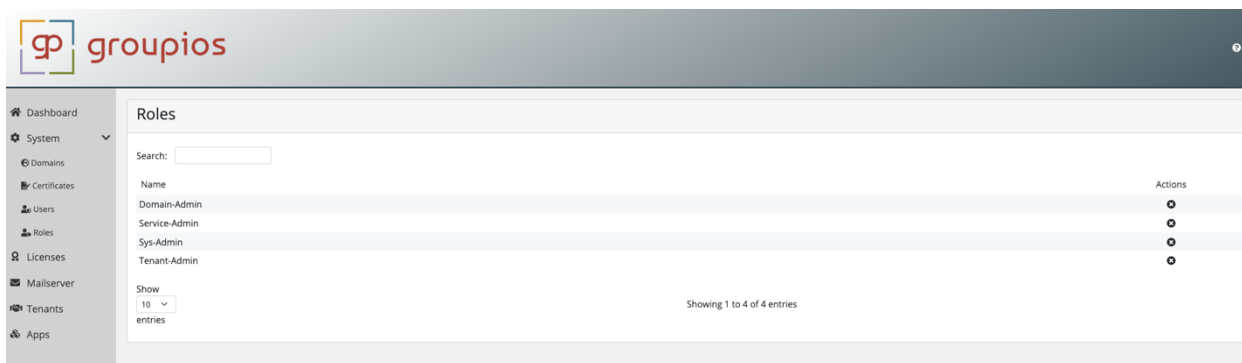
In your dashboard, you control the **system utilisation**, assign **administration rights**, manage your **domains** and control **extensive email rules**.

The admin console provides information about the **utilisation of the mail systems**, the **priority setting** for incoming and outgoing emails, the **configuration and management** of emails, provides an **overview of the data check** of network activities and **shows locations and administration levels**.

With a wide range of functions such as **individual white and black lists**, **greylisting**, **sender authentication**, **EHLO checks**, **watermarking** and **attachment filtering**, groupios offers effective all-round protection for your communication.

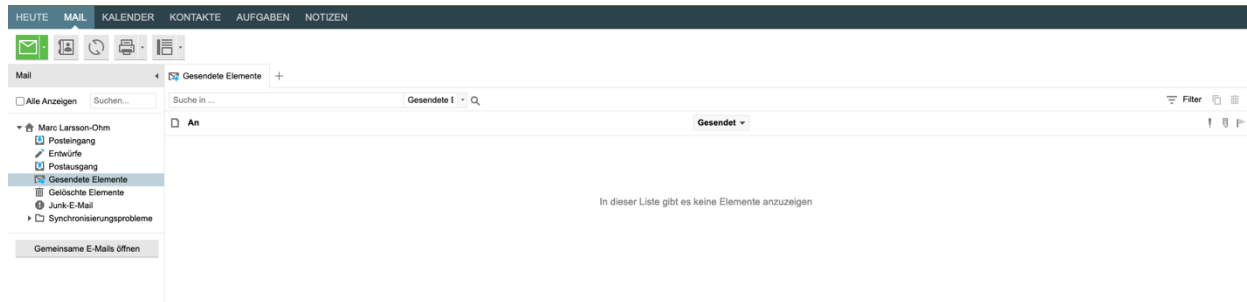
Assign and fix administration rights

Assign administration rights for different administration levels and give the respective user access to relevant system information.



groupios – Groupware with Kopano Cloud inside

The groupios EGA (Extended Groupware Application) has integrated the **Kopano Cloud as an OEM solution**, creating a broad functional basis with standardized administration that is suitable for **"on premises"** use.



groupios offers a **native Outlook connection** without the help of plug-ins or add-ons, including autodiscover functionality.

The following **clients** are supported by groupios: WebApp, Microsoft Outlook (from 2016, incl. MS 365), alternative clients via IMAP/POP3 (e.g. Thunderbird), Android and iOS via ActiveSync.

With the EGA, groupios provides familiar functions such as **mail, calendar, contacts, tasks and notes**; shared folders, aliases for users and domains as well as an extended global address book across several domains of an organisation are also possible. All **data always remains user-related** - even at the same hierarchy level.

groupios Security features

Dashboard (multi-client management console)

Dashboard start page

Display of system loads
for web interface and users

- CPU-Utilisation
- Memory-Utilisation
- HDD
- Inbound- and Outbound-Traffic

Dashboard access and management via page navigation for network administration

Reporting
Domain-Management
Various E-Mail-Rules
Assignment of rights to administrations,
hierarchy
locations
Configurations

System-Statistics

Display of current status of all services

System-Utilisation Webinterface and User
Traffic-Display: Inbound- and Outbound-Utilisation
Display of performed Logs
Top-50-Activities

Administration hierarchy

Administrative levels

Role-based release of authorisations and assignment of privileges

Domain-Management

Check of Data traffic

Pre-Check of Data traffic:

- Backscatter Filter, Backscattering of received bounce messages (e-mail cannot be delivered) or automatic replies to unsent messages
- Bounce-Messages
- Greylisting

Post-Check of Data traffic:

- Watermarking for reduction of „False Positive“
- Incl. Spam- and AV-Engine
- Checking file attachments
- Report and alarm planning

Various Mail-Rules

Global Message Size Limit

Global limitation of the message size
Optional restrictions on mail traffic

White- and Blacklists

White- und Blacklisting with optional adjustments and deletions

Smart Host Support

Use of the mail gateway as an "intelligent" host for SMTP Auth

Recording of all email addresses with activated user address book

Increase scanning efficiency and reduce false alarms

Pre-Check of Data traffic

Pre-Check	Data check before message text is sent Rejection of messages until the recipient of the message is determined Request and inclusion in white and black lists
SPF (Sender Policy Framework)/ Anti-Spoofing	Review of broadcasting licenses
rDNS	Checks and filters reverse DNS lists for generic and invalid rDNS doms
Bounce Messages	Help with sender identification and delivery errors
DNS Lists	Optional integration of DNS blocklists for incoming connections and URLs in mails
Watermarking	The mail gateway flags both incoming and outgoing messages with watermarks Reduction of system load and false positives
Sender- Authentication	Heuristics for sender identification
EHLO/HELO-Checks	Identification of the qualified host name of the sending system

Reliable protection against malware

Antispam Protection	Rspamd groupios DNS Blocklists optional additional Blocklists Greylisting rDNS Early Talkers
Virus & Malware Protection	ClamAV is license-free integrated (incl. Unofficial Signatures)
Attachment Filtering	Prevents unwanted attachments in the mail system
Check of Attachments	Retention of unrecognised senders and protection from infected attachments Block mails with unwanted attachments (f. e. .doc, .docx, .xls, .xlsx etc.)

Comprehensive Reporting

Analyses

Real-time analyses of:

- System utilisation
- Status of all basic services involved
- Spam volume

System requirements

AlmaLinux 9

Hard- and Software compability:

- All virtual environments
- All hardware components including servers

Do you have any questions? Please contact us!

TUXGUARD GmbH
Wilhelmstraße 9, D-24534 Neumünster
sales@groupios.com
+49 4321 / 87 26 7-0

Visit us on www.groupios.com!



About TUXGUARD

TUXGUARD GmbH has stood for IT security "Made in Germany" for over two decades. A team of innovative developers develops customised cybersecurity infrastructures that are, of course, GDPR-compliant and free of backdoors. Threats are recognised at an early stage and eliminated immediately. TUXGUARD's perfectly harmonised portfolio, based on the revolutionary Intelligence Cyber Management (ICM) technology, connects people and technology and offers reliable protection of sensitive data against any threats from the network.